



Obtain the Property Report required by Federal law and read it before signing anything. No Federal agency has judged the merits or value, if any, of this property. Ward Village is a proposed planned master development in Honolulu, Hawai'i that does not yet exist. Photos and drawings and other visual depictions in this advertisement are for illustrative purposes only and do not represent the amenities or facilities in Ward Village and should not be relied upon in deciding to purchase or lease an interest in the development. The Developer makes no guarantee, representation or warranty whatsoever that the developments, facilities or improvements depicted will ultimately appear as shown. This is not intended to be an offering or solicitation of sale. Square footage figures for each residence shown herein are approximations and no representation is made as to the accuracy of such figures.

Exclusive Project Broker Ward Village Properties, LLC. Equal Housing Opportunity.
Copyright © 2019.

Howard Hughes

wardvillage.com


WAIEA

LEVEL 35
FLOORPLATE

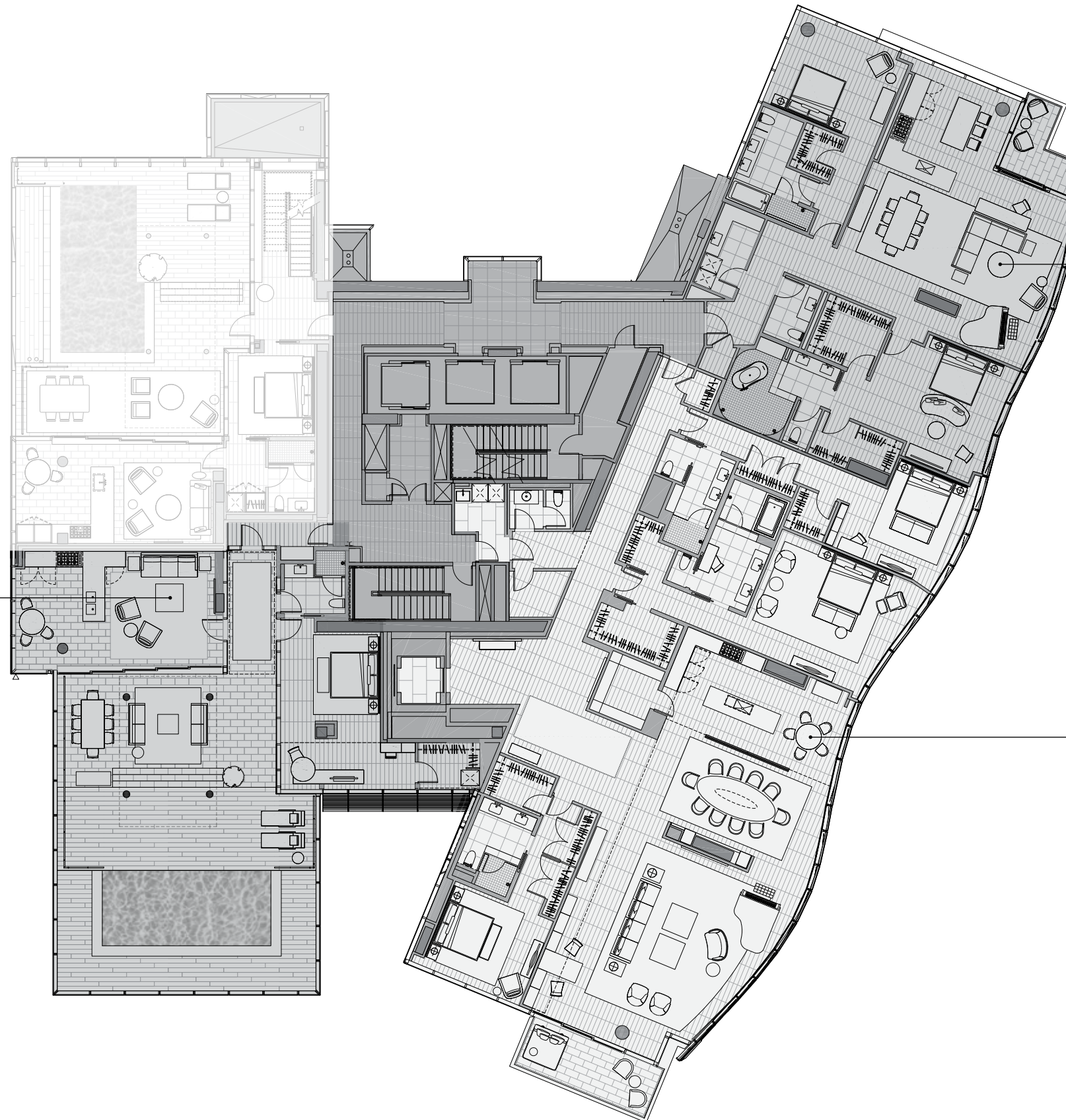
HONOLULU



LEVEL 35

PENTHOUSE B

TOTAL LIVING
2,975 SQ FT / 276.4 SQ M



PENTHOUSE D

TOTAL LIVING
2,710 SQ FT / 251.8 SQ M

PENTHOUSE A

TOTAL LIVING
4,905 SQ FT / 455.7 SQ M



Obtain the Property Report required by Federal law and read it before signing anything. No Federal agency has judged the merits or value, if any, of this property. Ward Village is a proposed planned master development in Honolulu, Hawai'i that does not yet exist. Photos and drawings and other visual depictions in this advertisement are for illustrative purposes only and do not represent the amenities or facilities in Ward Village and should not be relied upon in deciding to purchase or lease an interest in the development. The Developer makes no guarantee, representation or warranty whatsoever that the developments, facilities or improvements depicted will ultimately appear as shown. This is not intended to be an offering or solicitation of sale. Square footage figures for each residence shown herein are approximations and no representation is made as to the accuracy of such figures.

Exclusive Project Broker Ward Village Properties, LLC. Equal Housing Opportunity.
Copyright © 2019.

Howard Hughes.

wardvillage.com



LEVEL 35
PENTHOUSE A

HONOLULU



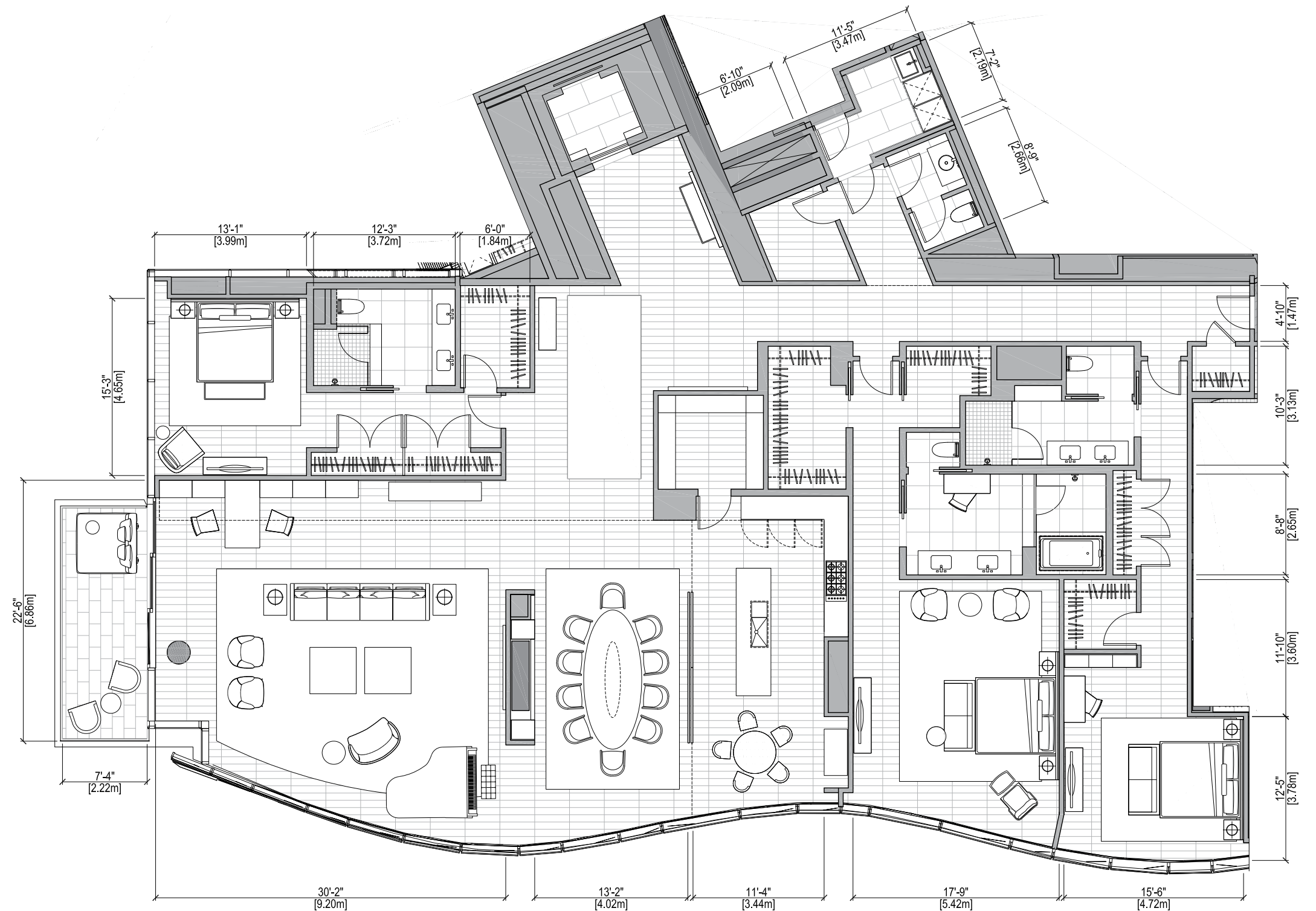
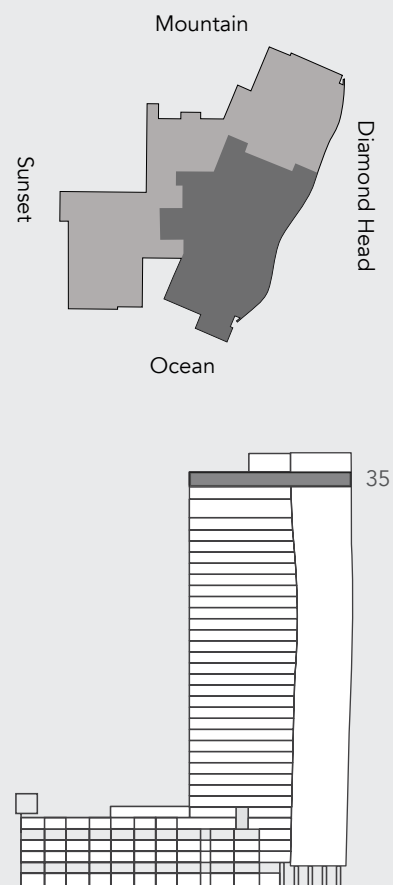
PENTHOUSE A LEVEL 35

3 bedrooms
3.5 bathrooms

NET LIVING
4,751 SQ FT / 441.4 SQ M

LĀNAI
154 SQ FT / 14.3 SQ M

TOTAL LIVING
4,905 SQ FT / 455.7 SQ M





Obtain the Property Report required by Federal law and read it before signing anything. No Federal agency has judged the merits or value, if any, of this property. Ward Village is a proposed planned master development in Honolulu, Hawai'i that does not yet exist. Photos and drawings and other visual depictions in this advertisement are for illustrative purposes only and do not represent the amenities or facilities in Ward Village and should not be relied upon in deciding to purchase or lease an interest in the development. The Developer makes no guarantee, representation or warranty whatsoever that the developments, facilities or improvements depicted will ultimately appear as shown. This is not intended to be an offering or solicitation of sale. Square footage figures for each residence shown herein are approximations and no representation is made as to the accuracy of such figures.

Exclusive Project Broker Ward Village Properties, LLC. Equal Housing Opportunity.
Copyright © 2019.

Howard Hughes.

wardvillage.com


WAIEA

LEVEL 35
PENTHOUSE B

HONOLULU



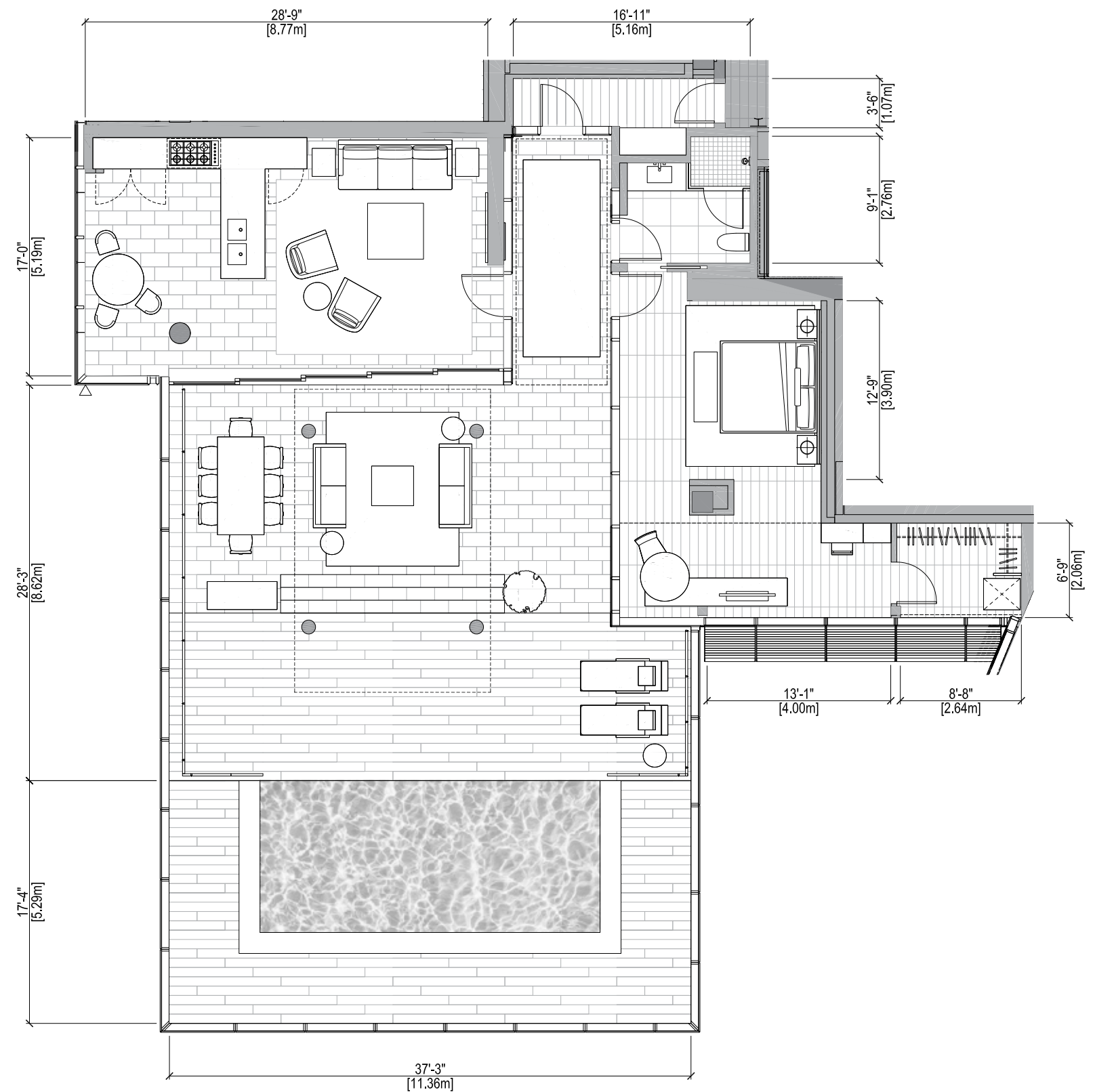
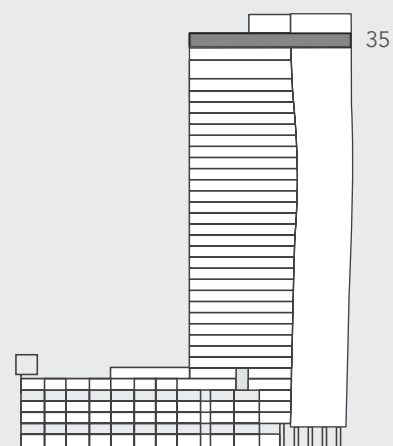
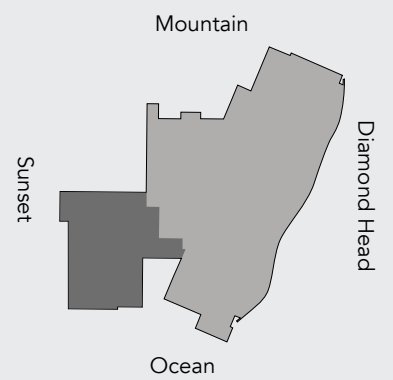
PENTHOUSE B LEVEL 35

1 bedroom
1 bathroom

NET LIVING
1,177 SQ FT / 109.3 SQ M

LĀNAI
1,798 SQ FT / 167 SQ M

TOTAL LIVING
2,975 SQ FT / 276.4 SQ M





Obtain the Property Report required by Federal law and read it before signing anything. No Federal agency has judged the merits or value, if any, of this property. Ward Village is a proposed planned master development in Honolulu, Hawai'i that does not yet exist. Photos and drawings and other visual depictions in this advertisement are for illustrative purposes only and do not represent the amenities or facilities in Ward Village and should not be relied upon in deciding to purchase or lease an interest in the development. The Developer makes no guarantee, representation or warranty whatsoever that the developments, facilities or improvements depicted will ultimately appear as shown. This is not intended to be an offering or solicitation of sale. Square footage figures for each residence shown herein are approximations and no representation is made as to the accuracy of such figures.

Exclusive Project Broker Ward Village Properties, LLC. Equal Housing Opportunity.
Copyright © 2019.

Howard Hughes.

wardvillage.com


WAIEA

LEVEL 35
PENTHOUSE D

HONOLULU



PENTHOUSE D LEVEL 35

2 bedrooms
2.5 bathrooms

NET LIVING
2,623 SQ FT / 243.7 SQ M

LĀNAI
87 SQ FT / 8.1 SQ M

TOTAL LIVING
2,710 SQ FT / 251.8 SQ M

